

# Child Opportunity Index

## Educational

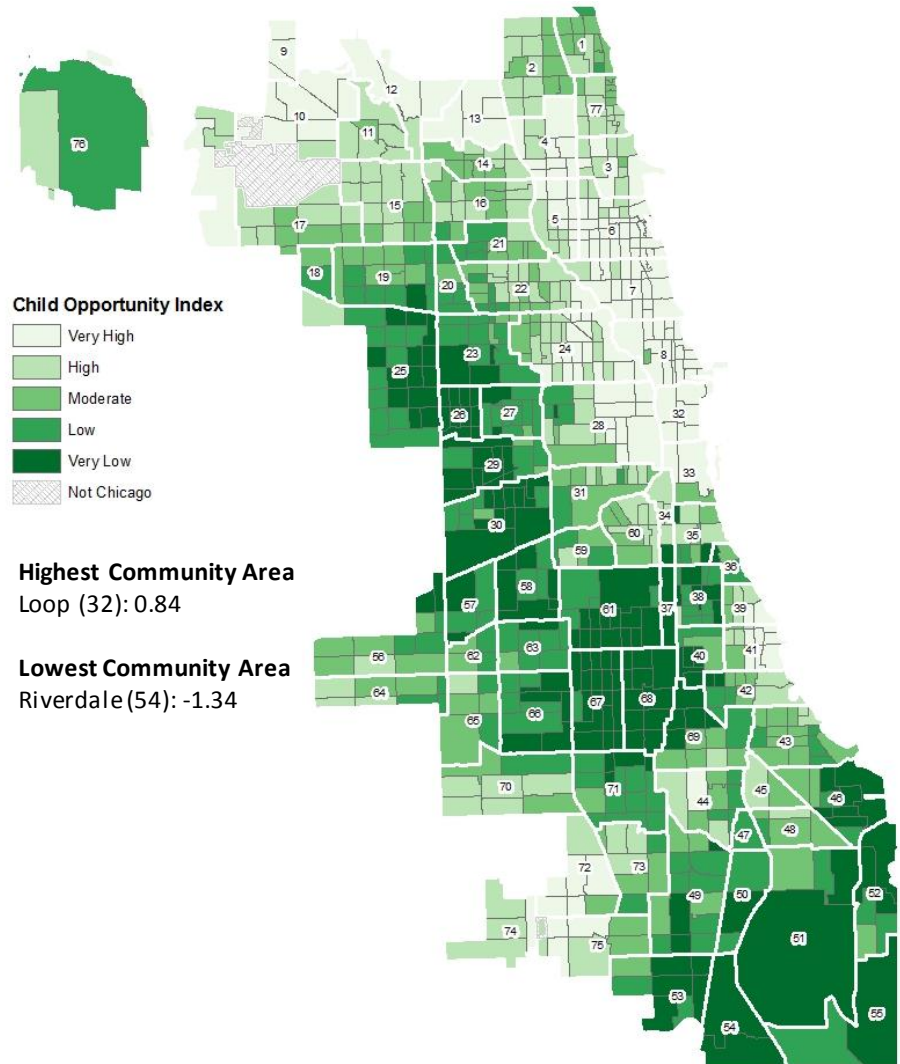
- Adult educational attainment
- Student (school) poverty rate
- Reading proficiency rate
- Math proficiency rate
- Early childhood education neighborhood participation patterns
- High school graduation rate
- Proximity to high-quality early childhood education centers
- Proximity to early childhood education centers of any type

## Health and Environmental

- Retail healthy food index
- Proximity to toxic waste release sites
- Volume of nearby toxic release
- Proximity to parks and open spaces
- Housing vacancy rates
- Proximity to health care facilities

## Economic

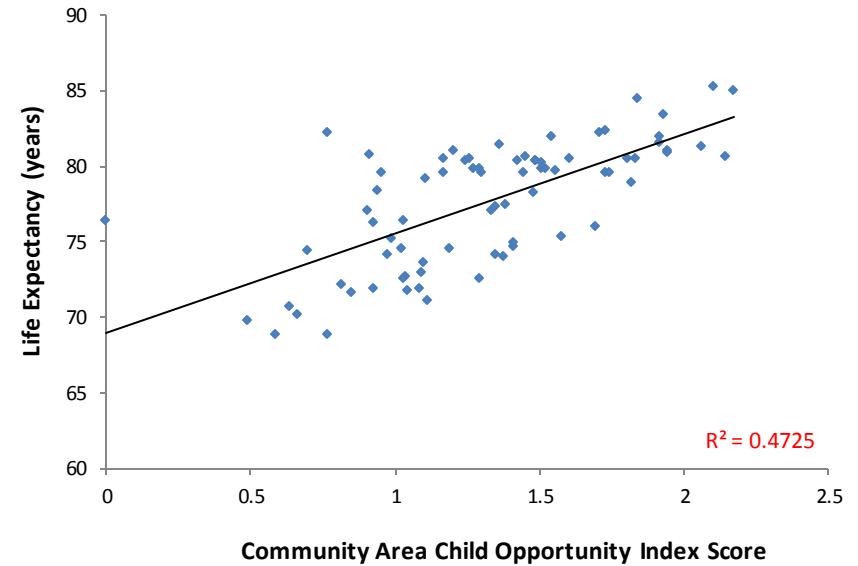
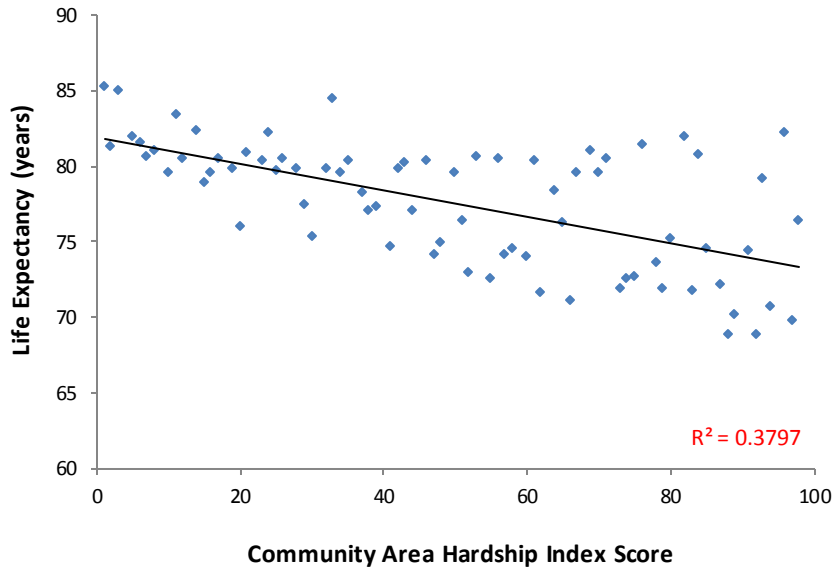
- Neighborhood foreclosure rate
- Poverty rate
- Unemployment rate
- Public assistance rate
- Proximity to employment



# Child Opportunity and Health Outcomes

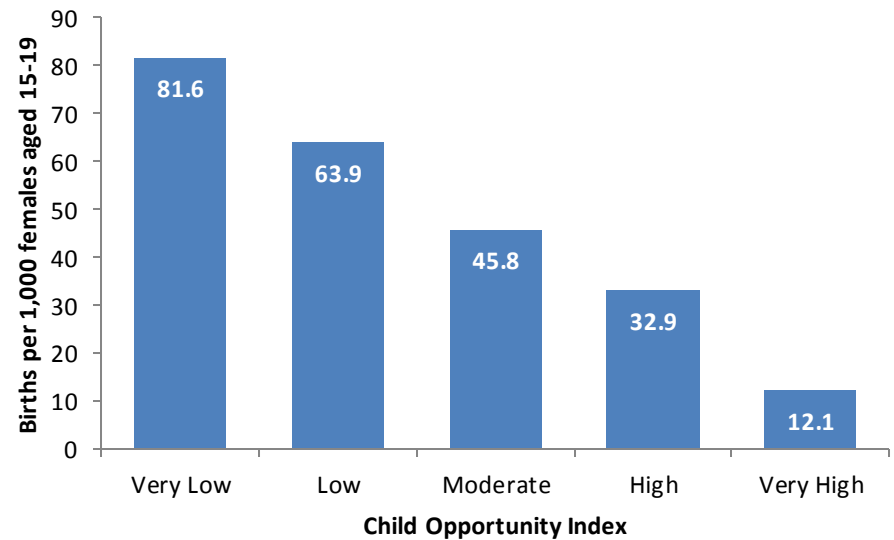
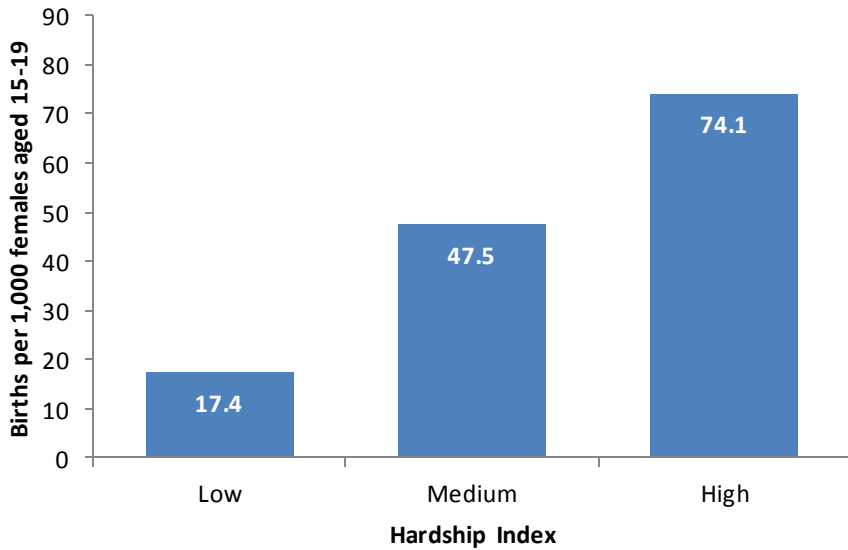
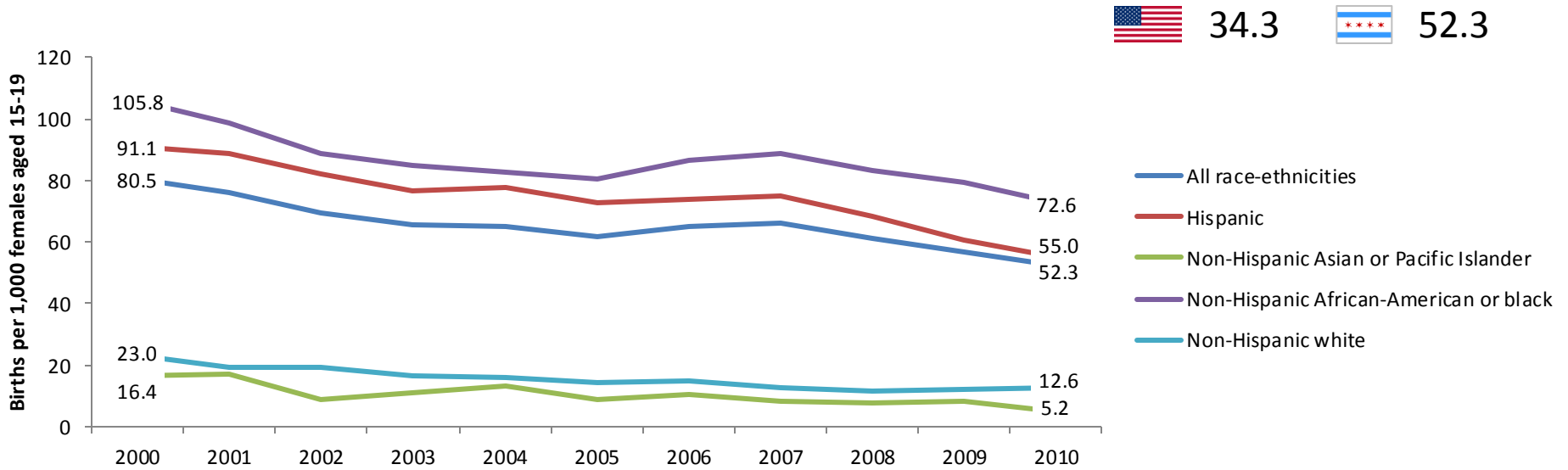
- **Less child opportunity in a neighborhood is strongly correlated with:**
  - Shootings
  - Elevated blood lead levels
  - Obesity in children
  - Life expectancy at birth
  - Diabetes-related mortality
  - Diet-related mortality
  - Teen births

# Life Expectancy at Birth Correlated with Hardship and Opportunity

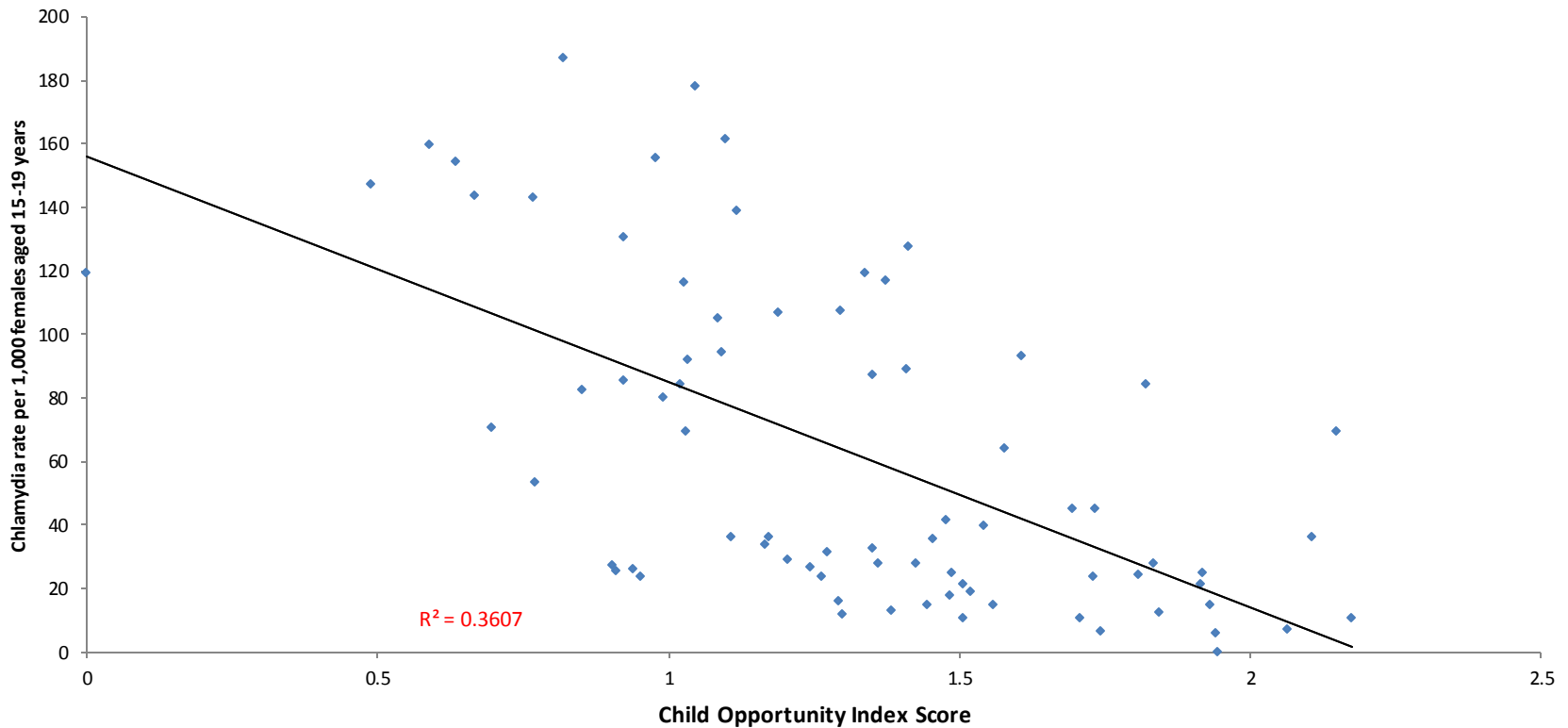


*Life expectancy is higher in community areas with lower hardship and more opportunity.*

# Teen Births

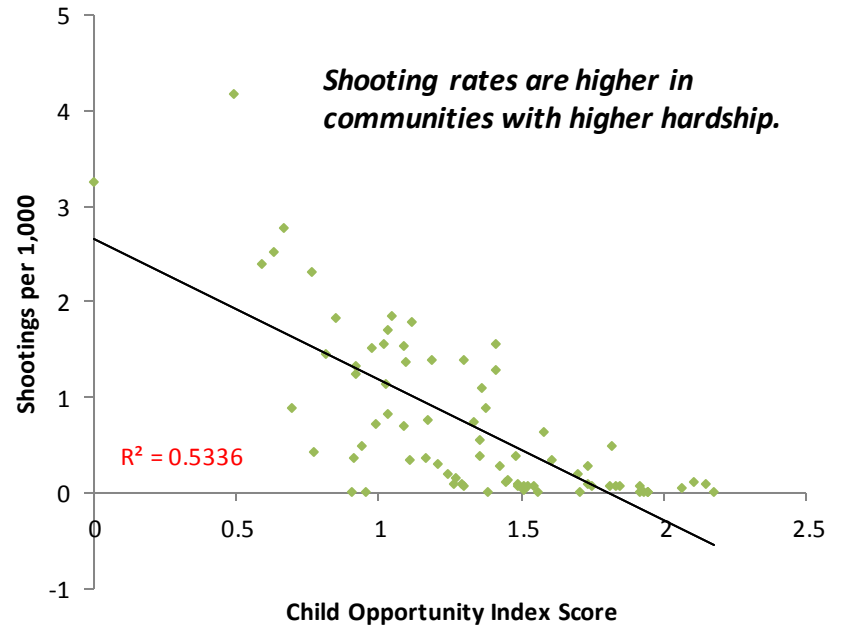
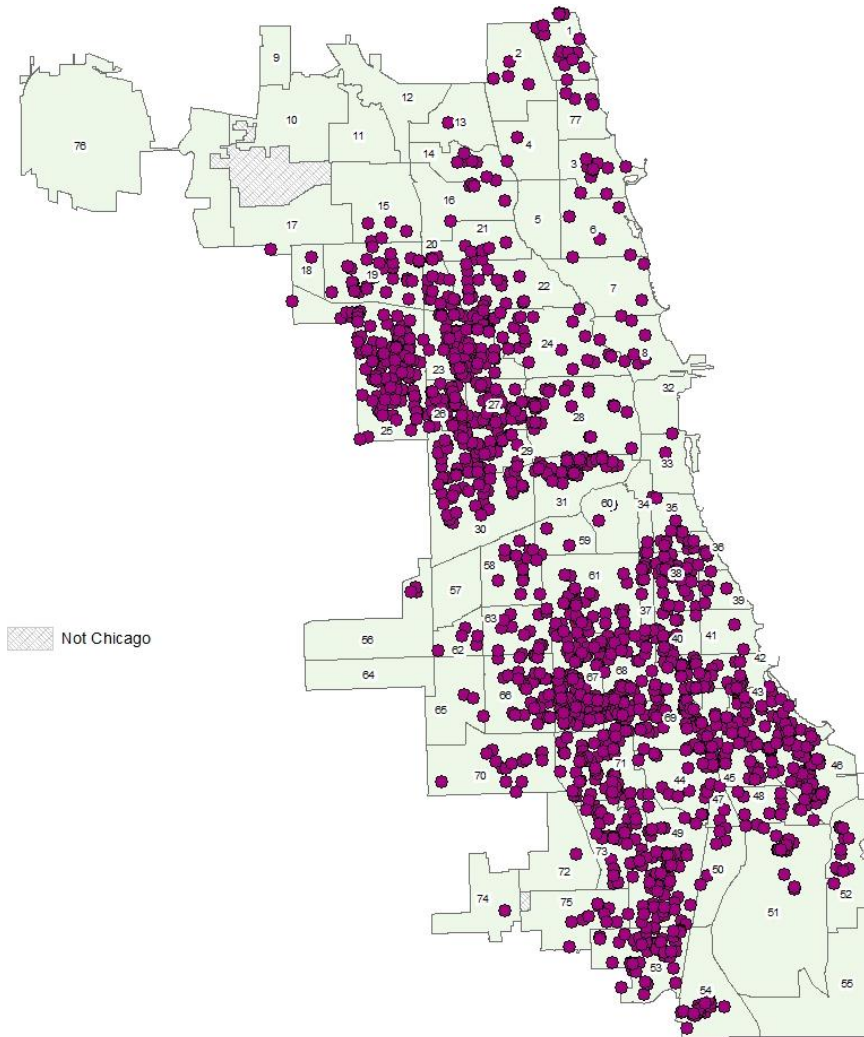


# Chlamydia and Child Opportunity

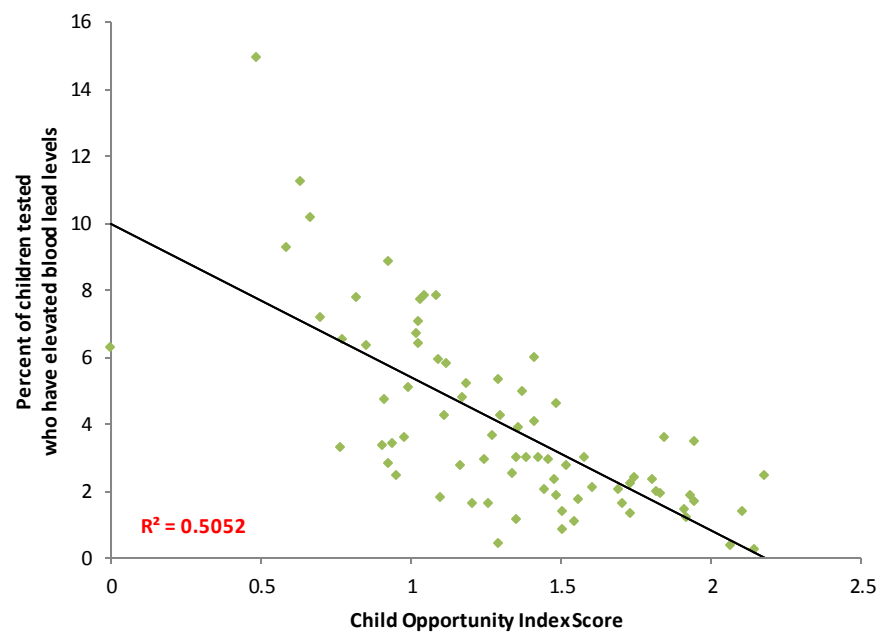
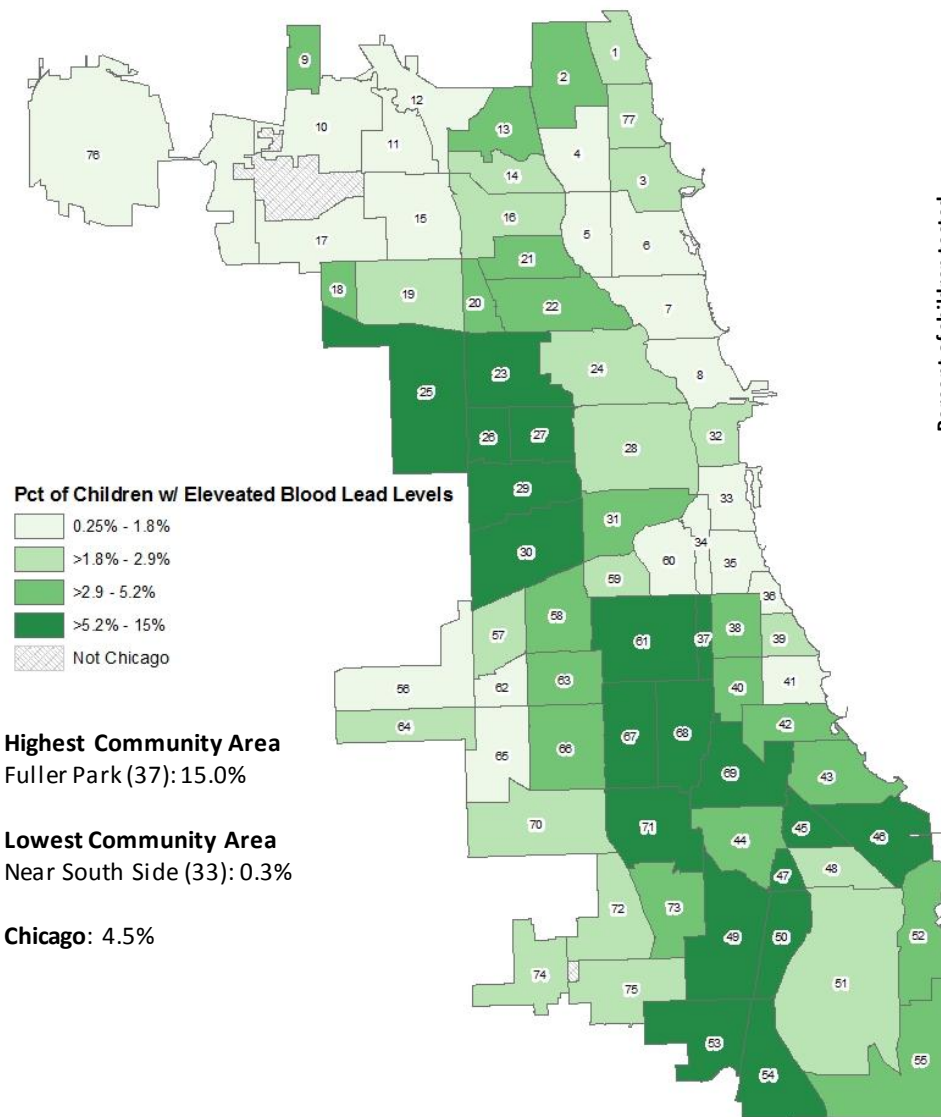


*Chlamydia among females aged 15-19 years is higher in community areas with less opportunity.*

# Non-fatal Shootings

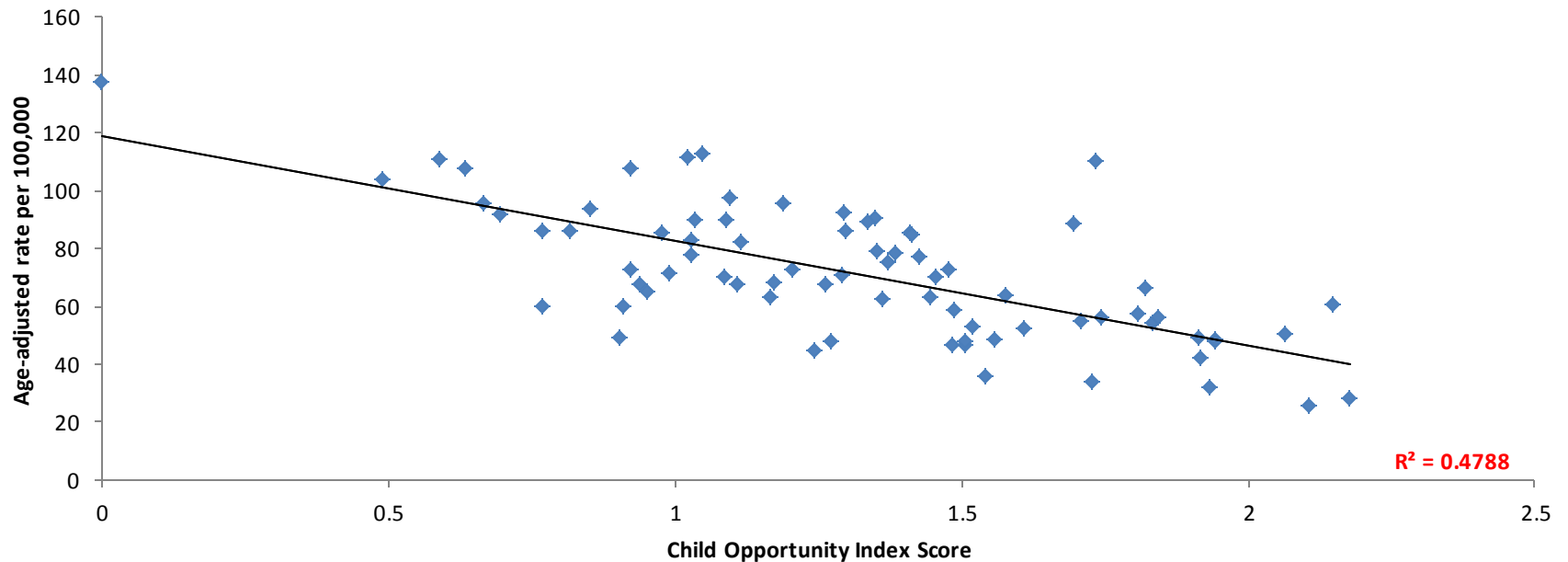


# Elevated Blood Lead Level and Child Opportunity



*Communities with less opportunity have higher percentages of children with elevated blood lead levels.*

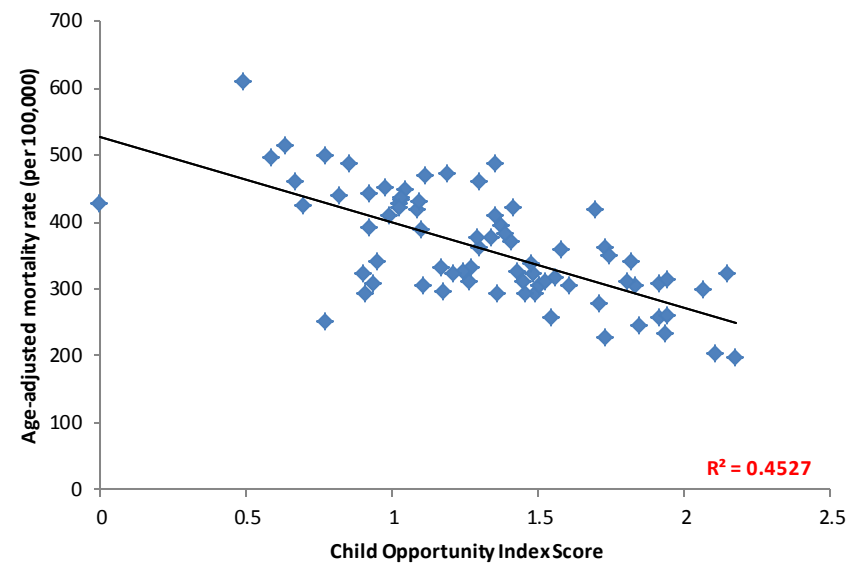
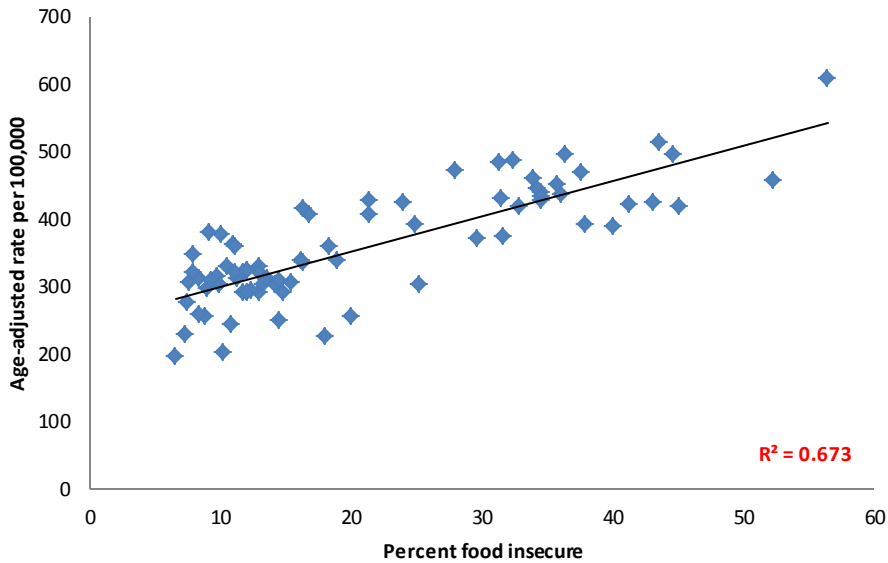
# Diabetes Mortality and Child Opportunity



*Diabetes-related mortality rates are higher in communities with less opportunity.*



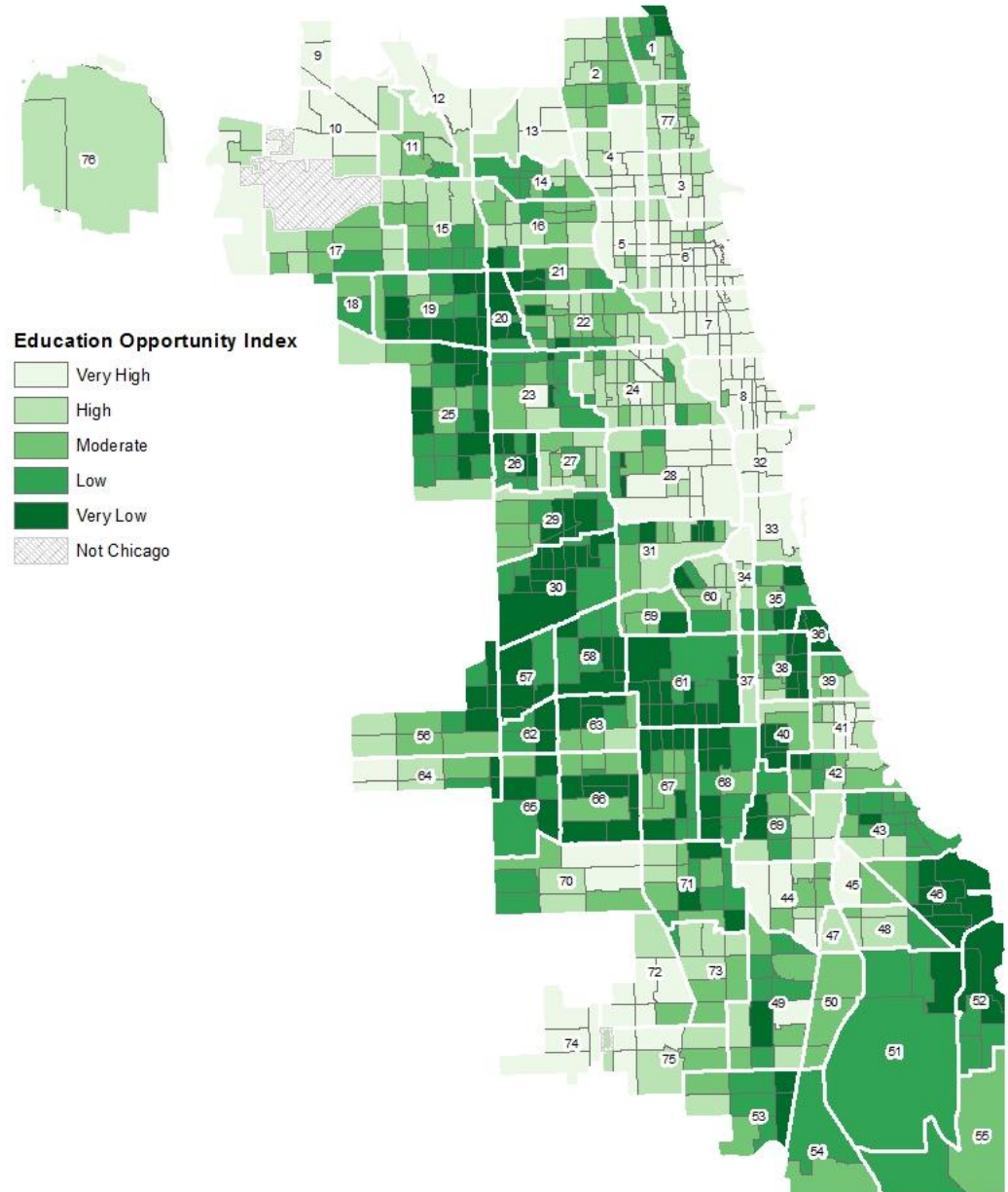
# Diet-related Mortality, Food Insecurity and Child Opportunity



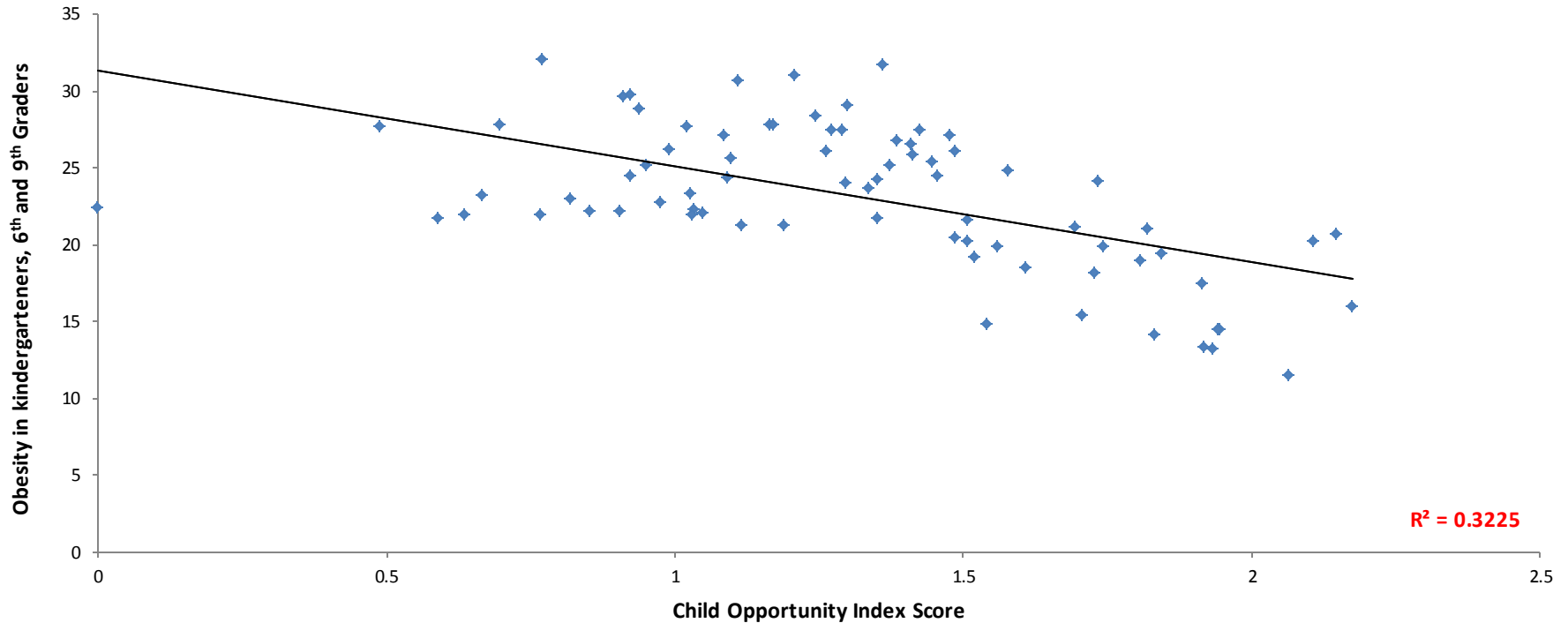
*Diet-related mortality rates are higher in communities with more food insecurity and less opportunity.*

# Educational Opportunity Index

- Adult educational attainment
- Student (school) poverty rate
- Reading proficiency rate
- Math proficiency rate
- Early childhood education neighborhood participation patterns
- High school graduation rate
- Proximity to high-quality early childhood education centers
- Proximity to early childhood education centers of any type



# Educational Opportunity and Obesity



*Obesity among CPS kindergarteners, sixth and ninth graders is greater in children with more educational opportunity.*