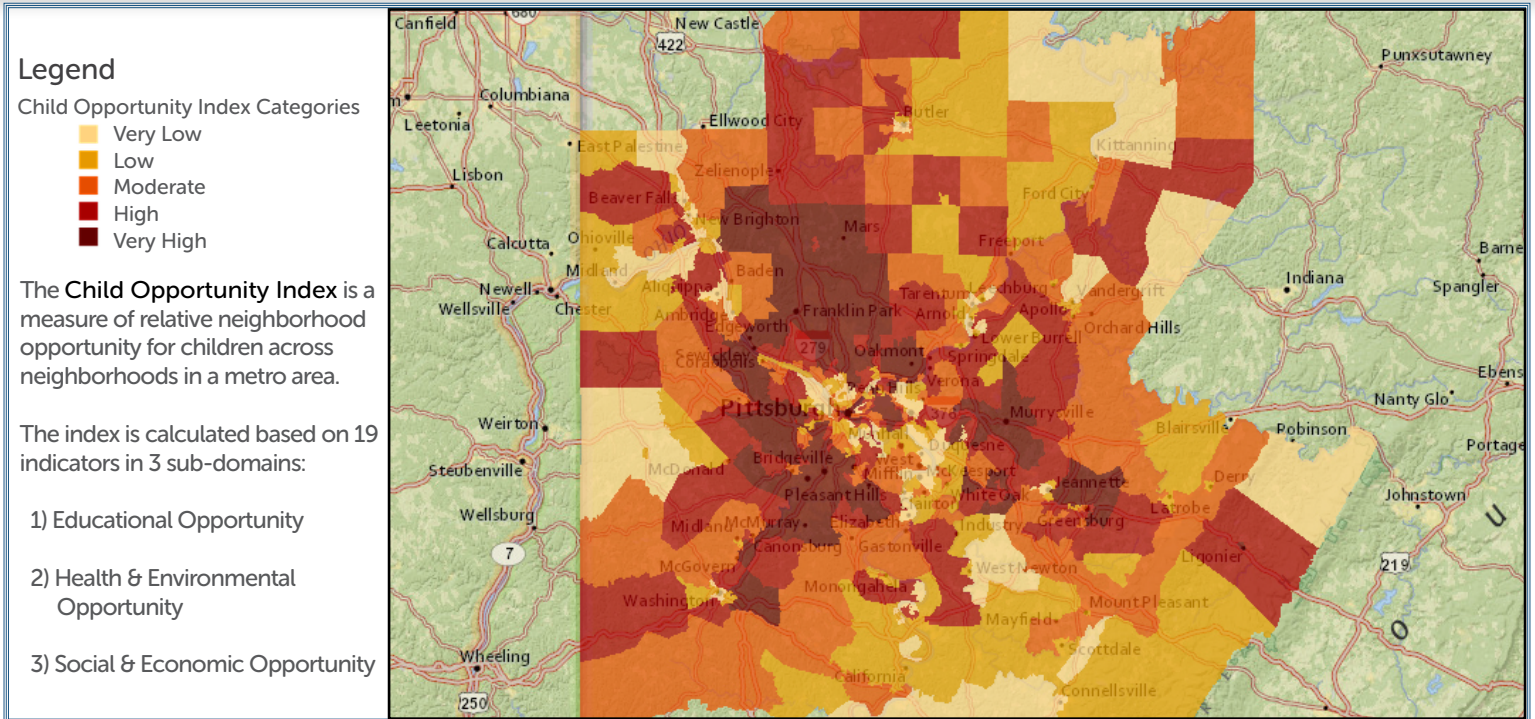


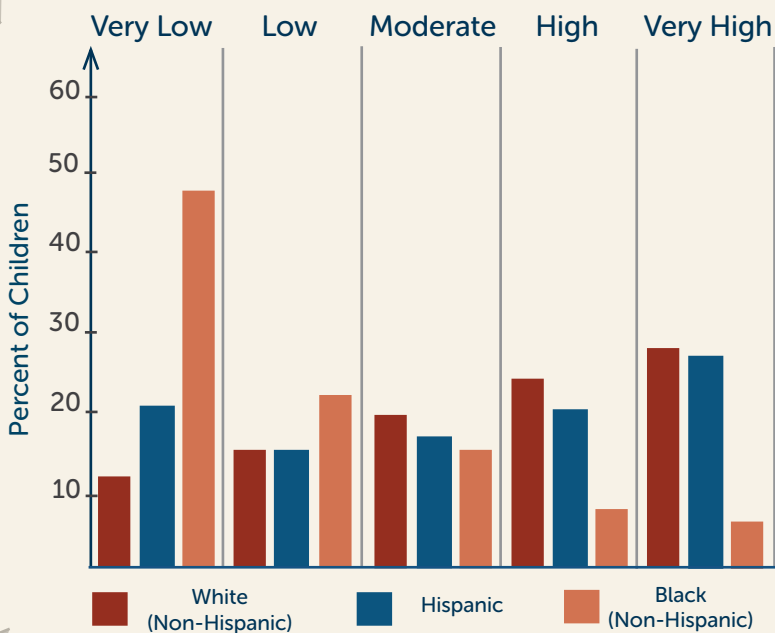
Pittsburgh, PA Metro Area Child Opportunity Index Map



BLACK CHILDREN IN METRO PITTSBURGH ARE HEAVILY CONCENTRATED IN VERY LOW-OPPORTUNITY NEIGHBORHOODS.

Percent of Metro Pittsburgh Children by Neighborhood Opportunity Category

METRO PITTSBURGH STATS



Over 463,000 children under 18 live in Metro Pittsburgh (2012). 80% are white, 11.2% are black, and 2.3% are Hispanic.

RANKINGS: (Of the 100 largest US metro areas)
Highest percentage of Hispanic children (27%) living in very high-opportunity neighborhoods within the metro area.

#21st Highest percentage of black children living in very low-opportunity neighborhoods within the metro area (48.3%).

RATIO:
Black children are 4 times more likely to live in a very low-opportunity neighborhood of Metro Pittsburgh than are white children.

Child Opportunity Index Maps & Rankings for the 100 largest metro areas are available at diversitydatakids.org

